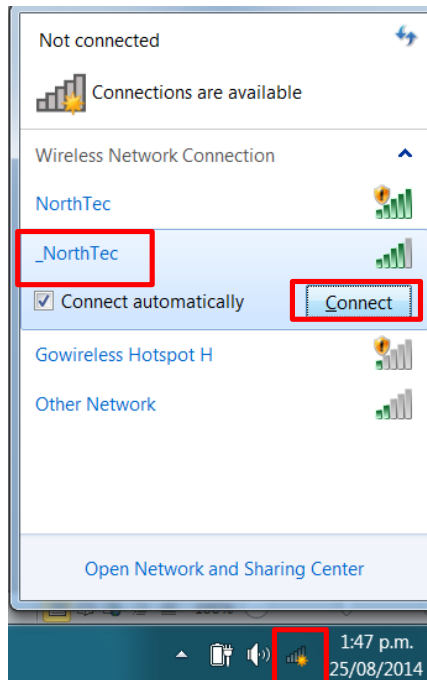


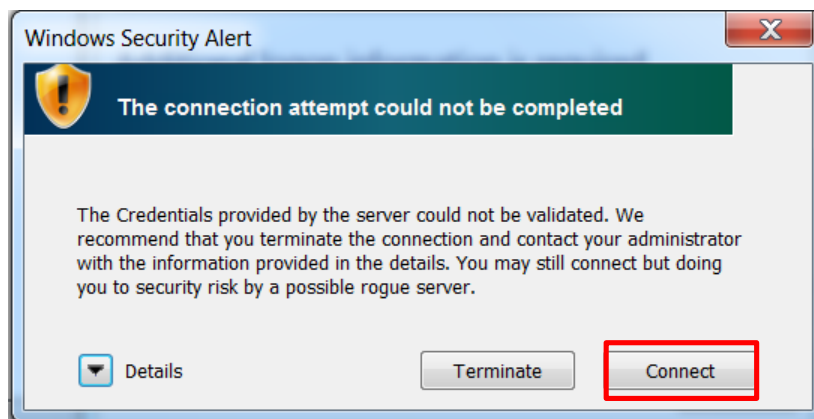
Connecting to NorthTec Wireless – Window 7 NorthTec Laptops

Below are the steps on how to connect NorthTec supplied Windows 7 devices to NorthTec’s Wireless Network. Please take note that you will only do this once if you set your device to connect automatically. Windows 7 picks up your NorthTec User ID and Password automatically so no need to key it in when connecting to “_NorthTec”.

1. Open up your wireless options, select _NorthTec and click Connect



2. You will then see the following Windows Security Alert, Click Connect



3. Your device should now have access to Internet Services.