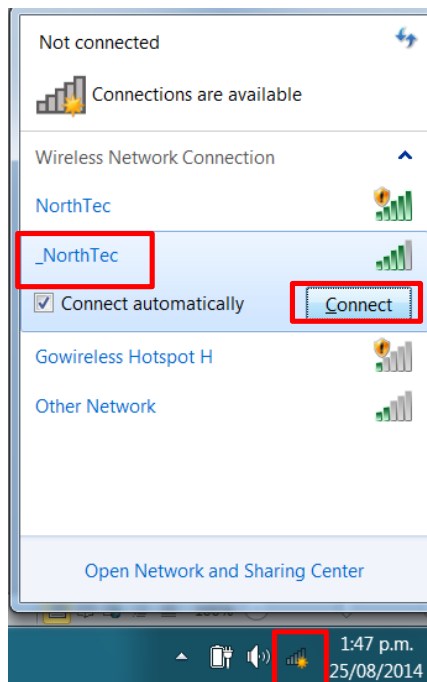


## Connecting to NorthTec Wireless – Window 7 Personal Laptop

Below are the steps on how to connect your personal Windows 7 devices to NorthTec’s Wireless Network. Please take note that you will only do this once if you set your device to connect automatically and remember your User ID and password. However, every time you change your password, you need to update the password on your device following the same process.

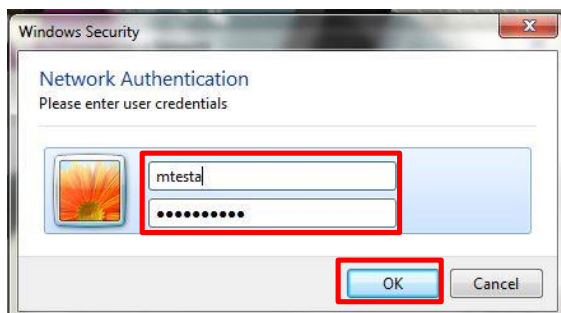
1. Open up your wireless options, select `_NorthTec` and click Connect



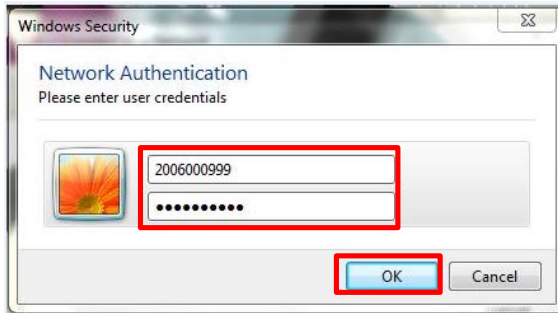
2. Your User ID and Password will be requested. Type it in and click on “OK”



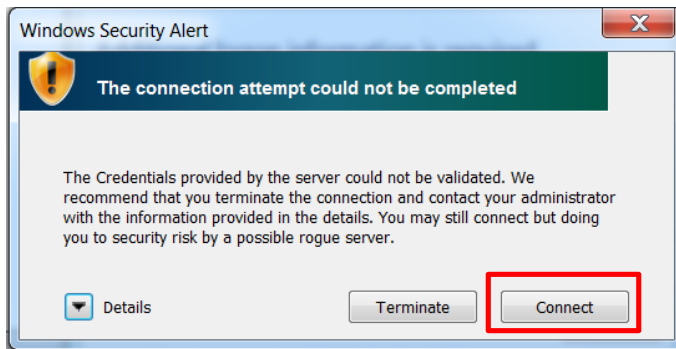
Staff Example:



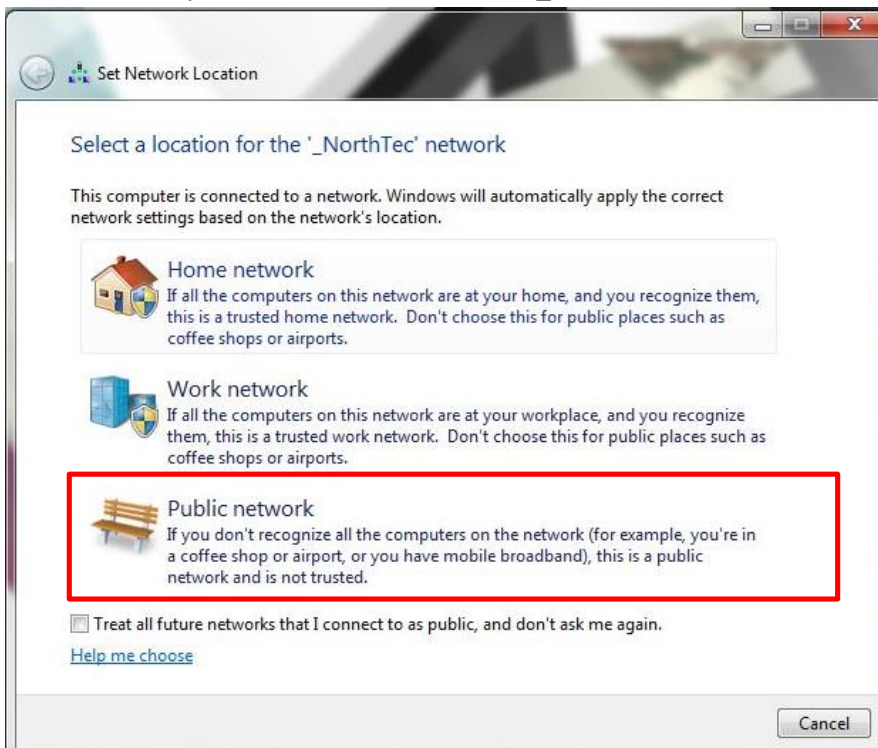
Student Example:



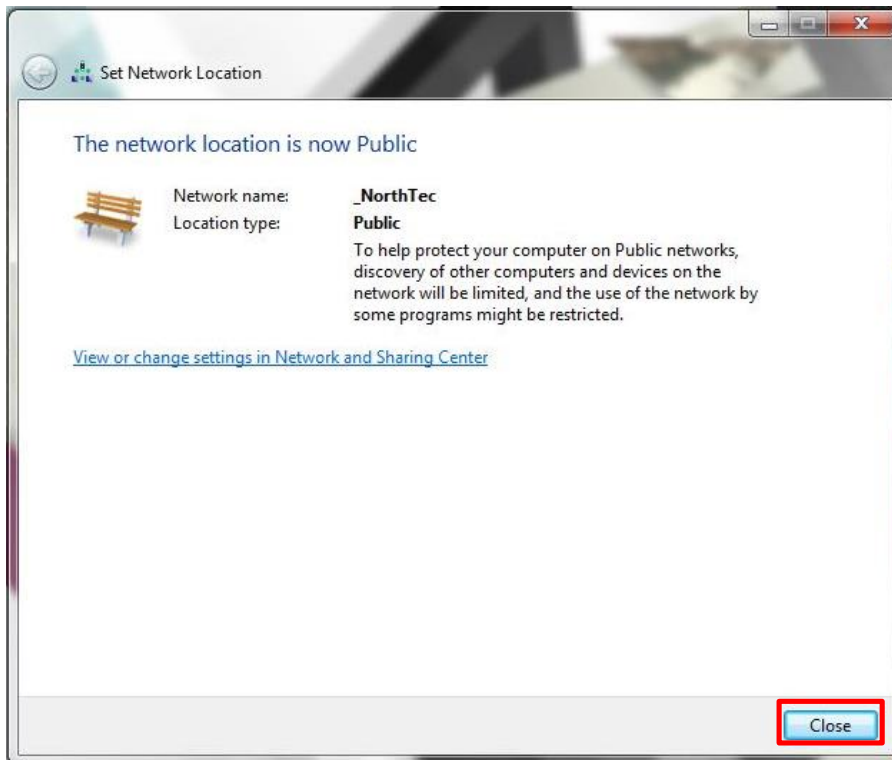
3. Below "Windows Security Alert" screen will pop out, Click "Connect"



4. It will then ask you to select the location of "\_NorthTec". Choose and click on "Public Network".



5. Below screen will pop out to confirm that you identified “\_NorthTec” as “Public” Network. Click on “Close” to finish the Set-up.



6. Your device should now have access to Internet Services through NorthTec’s Wireless Network.