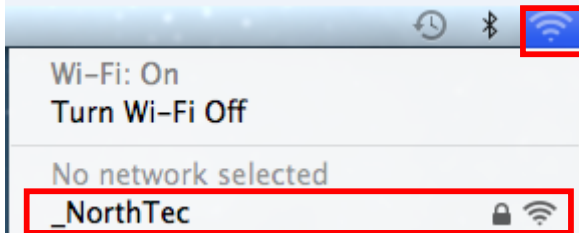


Connection to NorthTec Wireless – Mac

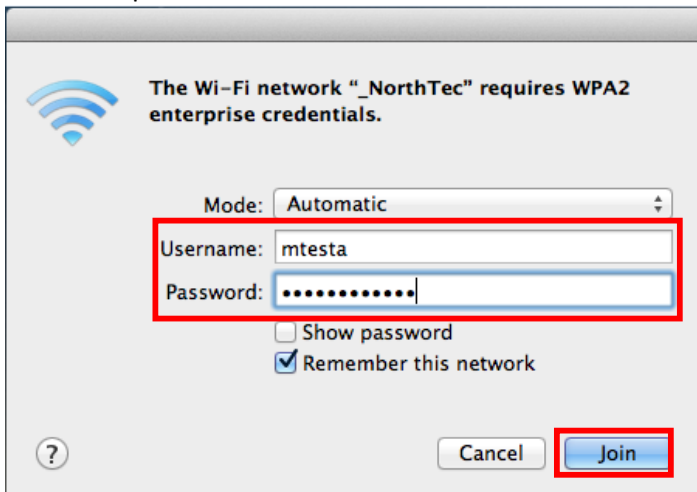
Below are the steps on how to connect Mac Laptops to NorthTec’s Wireless Network. Please take note that you will only do this once if you set your device to connect automatically and remember your User ID and password. However, every time you change your password, you need to update the password on your device following the same process.

1. Open wireless and select “_NorthTec”

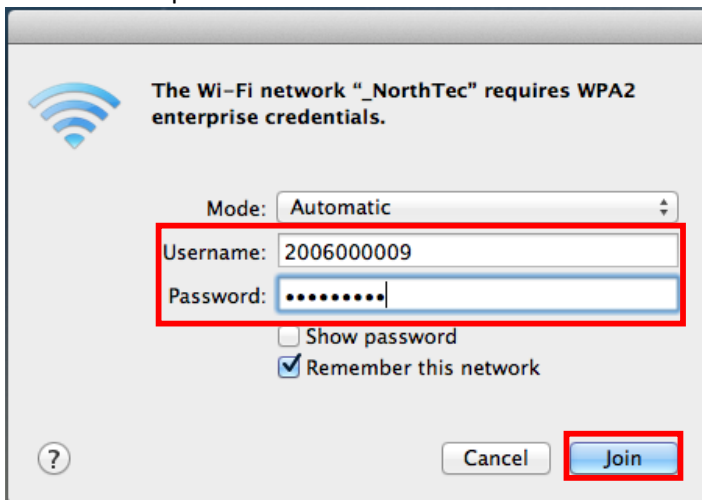


2. A window will pop out asking for your User ID and Password. Type it in and click Join

Staff Example:



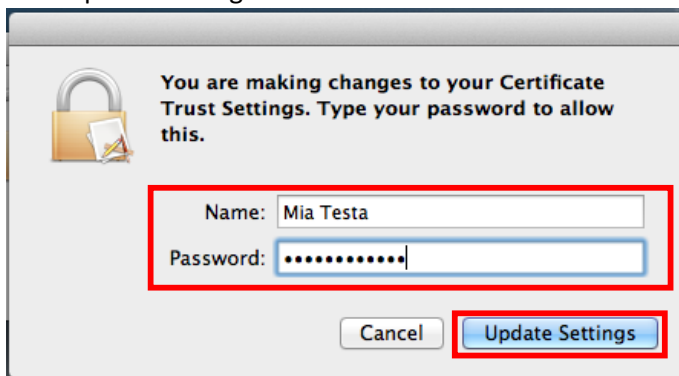
Student Example:



3. Window asking you to verify the certificate will pop out, click "Continue" button to proceed.



4. The following pop up will be requesting your personal computer login details, enter these in and click Update Settings



5. Your device is now connected to NorthTec Wireless Network and can now access Internet Services.